



IRON PRESSING MACHINES AND FUSING PRESSES

**USER'S INSTRUCTIONS - MANUAL
Steam generator STEAM TECH 1500**



Few words from the manufacturer

The steam generator “STEAM TECH 1500” is technically advanced machine, unique in its kind due to the fact that it has the possibility to operate both with automate and manual mode. It is manufactured based on international and European technical standards and safety rules, by a company with manufacturing experience since 1969.

Installation

This small, industrially made, steam generator is a small steam generating unit appropriate for small family businesses or companies, sewing businesses, small clothing industries, drycleaners, hotels, restaurants, homes etc. It is easy to use and provides excellent performance.

Boiler power: 1500 Watt-220V, 50 Hz, 1ph

Feeding: Regular tap water can be used, if it covers the following standards. If not please make sure to use softener or/and filters.

Water hardness	Below 100mg/l CaCo or below 6 German degrees
PH	7-8
TDS	Below 200mg/l
Fe	None
Suspended particles	The water must be free of suspended particles, colloids, alkali etc

Electrical connection

For the electrical connection and everything related to the electrical power supply, follow carefully the instructions of the electrical diagram you will find inside this manual Pay special attention to the warning stickers on the machine. Connect the machine to the power supply using the sucko plug. On condition that the electrical supply is 230V/1ph, the connection must be made using a 3-core cable (1 ph, 1 neutral, 1 earthing). The electrical power must be secured with a 16A fuse.

ATTENTION!

The manufacturer has no responsibility for any damages or accidents that may be caused by faulty electrical power supply, or in case the electrical connections – works are done by unauthorized personnel.

ATTENTION!

- **It is strictly forbidden to** thermally intervene in boiler (nr:35, page 6), before you consult with the manufacturer, who bears no responsibility for any possible damages caused, if he is not consulted.
- **It is strictly forbidden for anyone to** alter the technical features, electrical and/or mechanical. In case this happens, the manufacturer bears no responsibility for any possible damages that may occur.

How to operate your Steam tech 1500

1) Automated function (AUTO)

- Fill the 10L water tank (nr:47, page 5) with tap water (see page1)
 - Connect the plug to the electrical power supply socket
 - Make sure the safety lid (nr:53, page 4, photo1) is screwed on properly
 - Turn the selector switch (nr:3, page 4, photo 1) to “AUTO” function
 - Turn on the boiler switch (nr:2, page 4,photo1) and the Iron switch (nr:1,page 4, photo1)
 - The water pump will start to work for the automated water feed on the boiler. The green light with the sign “PUMP” will remain on for as long as the water pump works. The red light with the sign “STEAM” will turn on after a few seconds and the boiler will start heating the water in order to produce steam. This takes approximately 15-20 seconds.
 - Wait until the red light with the sign “STEAM” is turned off. The manometer (nr:4, page 4, photo1) should have reached 3.5 bars by now.
 - The machine is ready to be used. Press the iron’s steam button so that steam will come out of the iron (photo 2, page 4).
- **Note: For the first steam burst, turn your iron towards the ground!** to avoid any possible stains on the cloth. This due to the fact that the steam hose is still cold and some liquefaction may occur.
 - Before you start working make sure the water tank (nr: 47 (10L) is full.
 - In case the pump works and you start hearing unusual noise from it for a long time, the water tank probably is empty or the water filter of the water feeding hose or the boiler’s entrance is blocked. Please add water or clean the different parts or contact a technician.
 - **In case of damage in the system’s auto water feeding due to damage in the water tank or blockage of the water supply, turn the machine to manual function by turning the selector switch to “MAN” and carry on with your work.**

After the completion of usage

- Turn the iron’s switch (nr:1, page 4, photo 1) and the boiler switch (nr:2, page 4,photo1) off.
 - Open/turn the Ball Valve/tap (nr:52, page 5) with caution to its ¼ to remove all of the boiler’s remaining water – **Caution, there is danger of burn!**
- ### 2) Manual function (MAN-ECO)
- Fill 3.5L of tap water (see page 1) in the boiler by opening the safety lid (photo 4, page 4). Then screw the safety lid on properly and securely.
 - Turn the selector switch (nr:3, photo 1, page 4) to mode “MAN - ECO”
 - Connect the plug to the electrical power supply socket.
 - Turn on the boiler switch (nr:2, page 4,photo1) and the Iron switch (nr:1,page 4, photo1)
 - Wait until the manometer’s (nr:4, page 4, photo1) needle reaches 3.5 bar
 - The machine is ready to be used. Press the iron’s steam button so that steam will come out of the iron (photo 2, page 4).
- **Note: For the first steam burst, turn your iron towards the ground !** to avoid any possible stains on the cloth. This due to the fact that the steam hose is still cold and some liquefaction may occur.
 - When the water in the boiler runs low, the “ALARM” light (nr:5, page 4, photo 6) will switch on and the beeper will be activated to remind you that you have to refill the boiler with water.

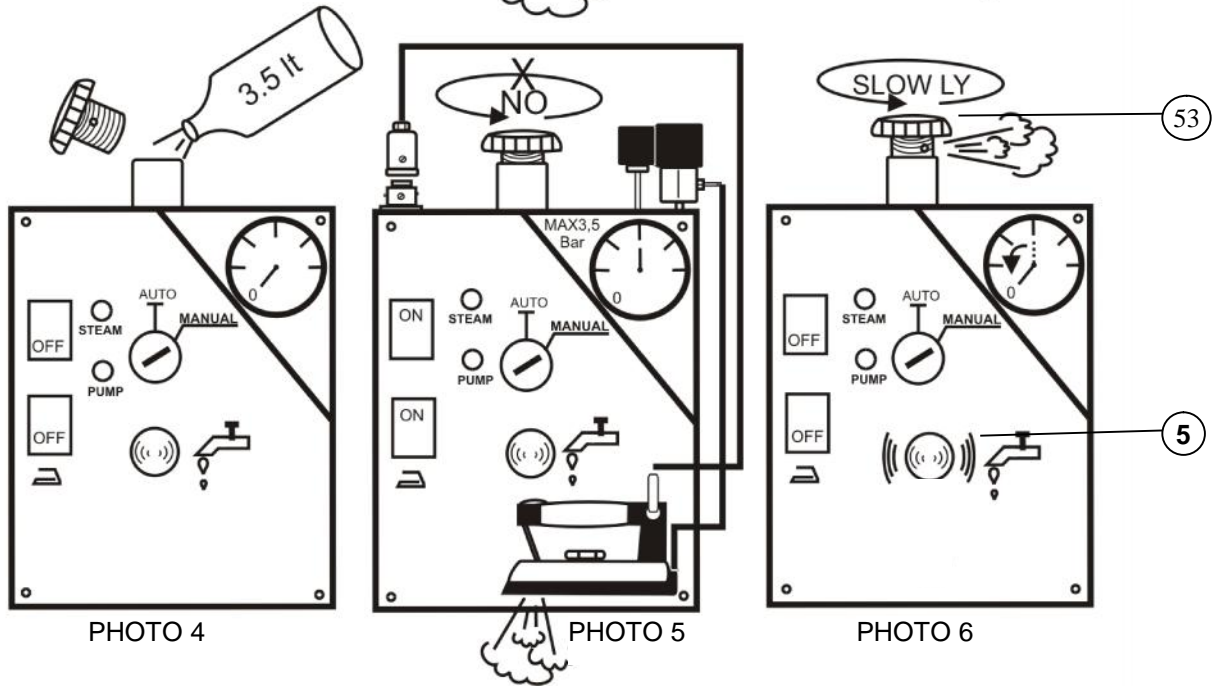
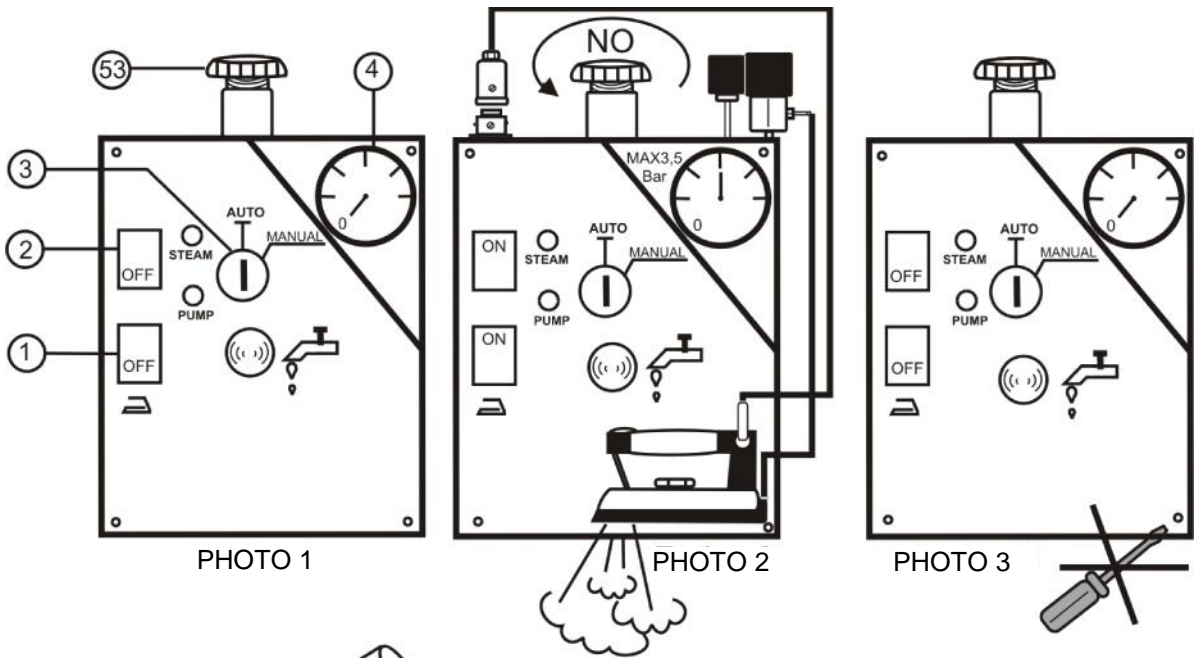
- Turn off the machine by turning the boiler switch (nr:2, page 4,photo1) and the Iron switch (nr:1,page 4, photo1) off.
- Remove all the remaining steam by slightly unscrewing the safety lid (nr:53, page 4, photo 6) or by constantly and repeatedly pushing the steam iron button so that the steam will evaporate through the iron.
- Open the safety lid (nr:53, page 4, photo 6) and refill the boiler with 3.5L tap water.
- Repeat the procedure from the start.

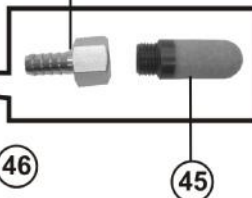
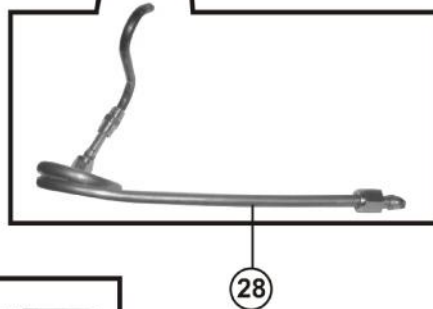
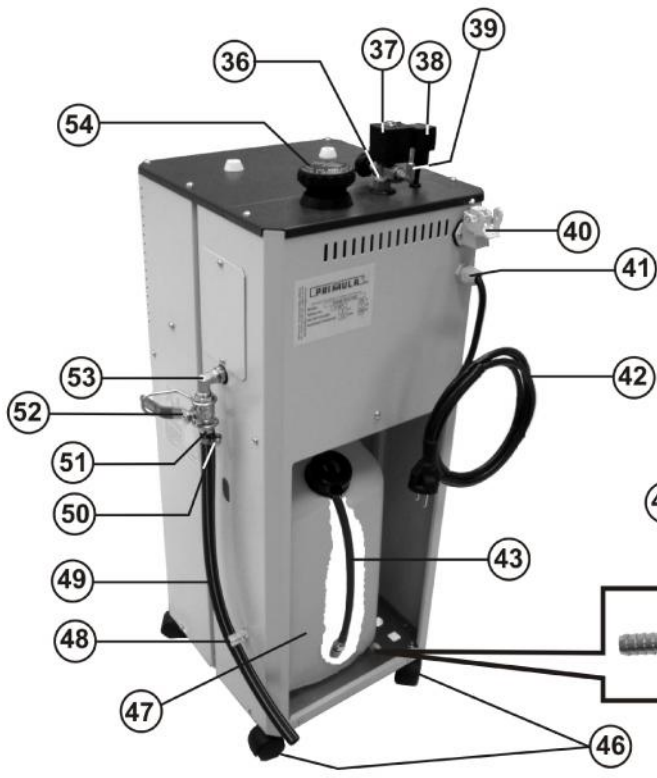
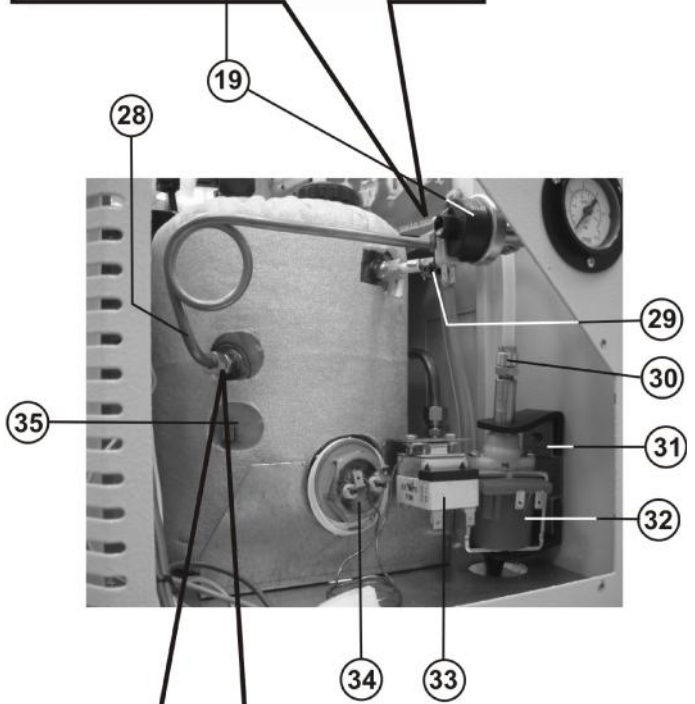
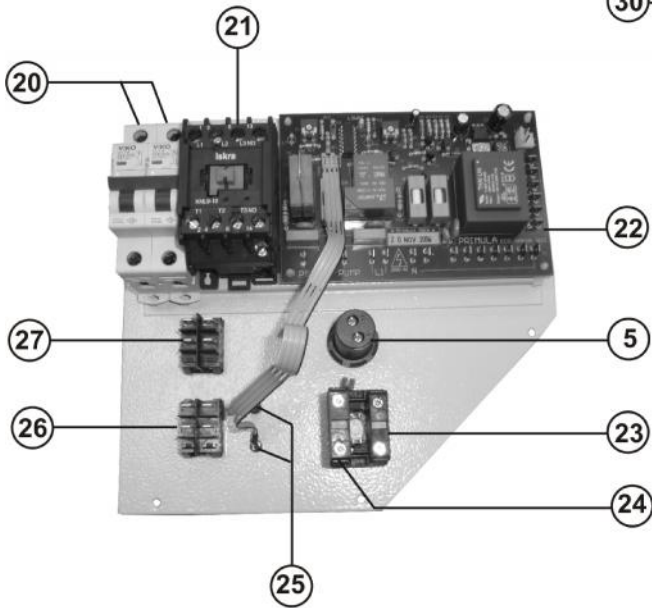
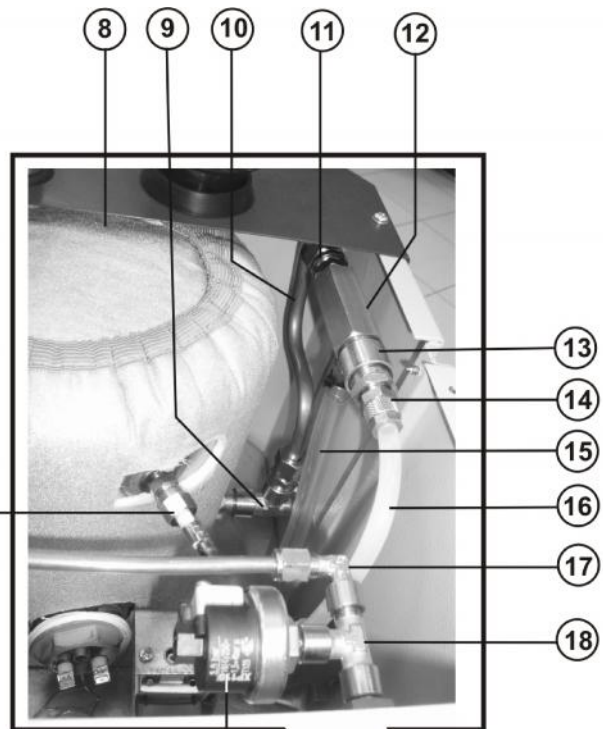
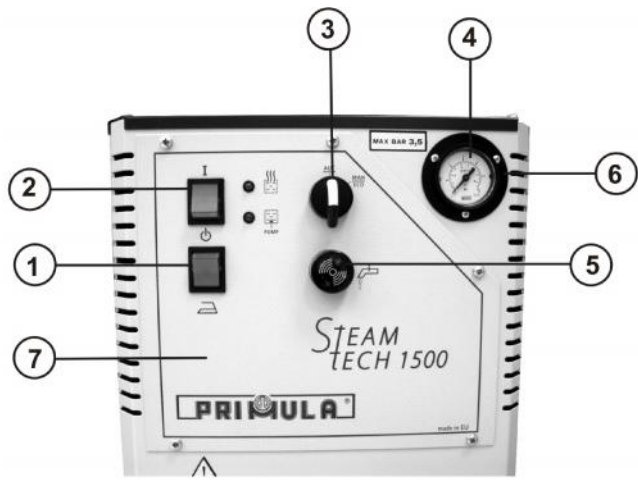
After the completion of usage

- Turn the iron's switch (nr:1, page 4, photo 1) and the boiler switch (nr:2, page 4,photo1) off.
- Open/turn the Ball Valve/tap (nr:52, page 5) with caution to its ¼ to remove all of the boiler's remaining water – **Caution, there is danger of burn!**

ATTENTION !

- If you notice any abnormality in the boiler's function, turn off all switches, unplug the machine from the power supply and call our company's service
- Daily, after you finish working you must empty the water from the boiler by opening the Ball Valve/tap (nr:52, page 5) with caution, as described above, after you turn the general function switches off
- To clean the boiler from salts, you can use water mixed with vinegar or any special chemical liquid that is designed for cleaning boilers.
- For your own safety, and also to maintain the Steam Tech 1500 in excellent condition, use only genuine spare parts when you do any repairs.



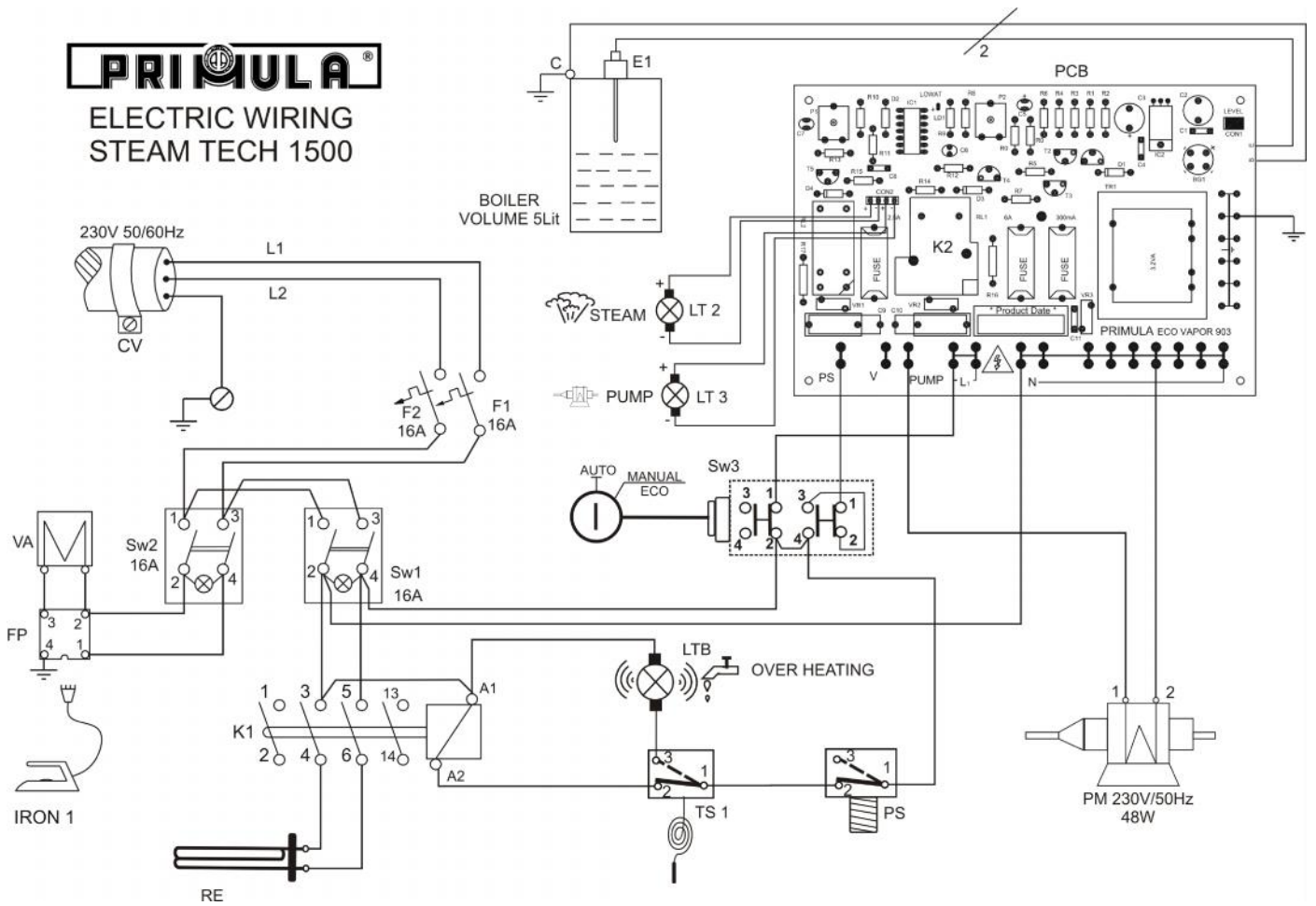


SPARE PARTS LIST FOR THE BOILER OF THE STEAM TECH 1500

No	CODE	DESCRIPTION
1	308-00-006	ON-OFF switch 16A
2	308-00-006	ON-OFF switch 16A
3	303-10-003	Selector knob 0-1
4	303-10-004	Pressure gauges \varnothing 40 6Bar
5	303-10-005	Indicative lamp - beeper
6	303-10-006	Manometer rosette
7	193-10-007	Panel
8	303-10-008	Boiler insulation
9	300-00-280	Hydraulic Tee 3/8"
10	193-10-010	Copper pipe for water feeding 3/8"
11	303-10-011	Reduced straight connection 3/8"X3/8"
12	303-10-012	One way valve 3/8"
13	303-10-013	Coupler 3/8"
14	303-10-014	Racor 1/4"X6mm
15	303-10-015	Pump's vent hose
16	303-10-016	Pump's water feed hose
17	303-10-017	Angular racor 1/4"
18	303-06-013	Hydraulic Tee 1/4"
19	303-10-019	Pressure switch 1/4"
20	303-06-033	Fuse 16A
21	302-00-010	Contacteur
22	303-10-058	Electronic plate
23	303-10-023	Selector contact C2
24	303-10-024	Selector contact C1
25	303-10-025	Indicative lamps PUMP-STEAM
26	308-00-006	ON-OFF switch 16A
27	308-00-006	ON-OFF switch 16A
28	193-10-028	Pressure switch's copper pipe
29	193-10-029	STEAM TECH electrode
30	303-10-014	Racor 1/4"X6mm
31	303-10-031	Water pump base
32	303-10-021	Water pump
33	303-10-033	Safety thermostat
34	303-10-034	Heating element 1.5 KW
35	303-10-035	Boiler inox 5lt
36	303-03-010	Steam valve
37	308-00-002	Steam valve's coil
38	308-00-003	Steam valve plug
39	308-00-004	Corner of solenoid steam valve
40	302-22-020	4-core angular safety plug
41	303-03-041	Cable gland
42	302-26-005	Supply cable 3X1,5mm with plug
43	303-10-043	Tank's water feed hose

44	303-10-044	Racor of water filter
45	303-10-055	Water filter
46	303-10-046	Rotating wheel Ø 40
47	303-10-047	Water tank 15lt
48	303-10-048	Bracket vent pipe
49	303-10-049	Vent hose
50	303-03-045	Clamp 10-16
51	303-10-051	Racor 3/8"X9mm
52	303-10-052	Ball-valve 3/8"
53	303-10-053	Angular 3/8" male-female
54	303-10-054	Safety cap valve
55	303-10-055	Vent tank 5lt

STEAM TECH 1500 ELECTRICAL DIAGRAM



	CODE	DESCRIPTION
SW1	308-00-006	ON-OFF switch 16A
SW2	308-00-006	ON-OFF switch 16A
SW3		Selector contact C1+C2
RE	303-10-034	Heating element 1,5KW 230V
TS1	303-10-033	Safety thermostat 200°C
PS	303-02-020	Pressostat
LTB	303-10-005	Indicative lamp - beeper
PM	303-10-032	Water pump
FP	302-22-020	4-core angular safety plug
VA	303-03-010	Steam valve 9934
LT2	303-10-025	Indicative lamps PUMP-STEAM
LT3	303-10-025	Indicative lamps PUMP-STEAM

Technical support

For any information needed about the function or the spare parts of the machine contact your local distributor or our offices, in the following address

MAIN BUILDING / SHOW ROOM/ FACTORY:

14th Km Thessaloniki - Kilkis (Liti)

Tel: +30 23940 71245 Fax: +30 23940 71438

E-mail: info@primula.gr

<http://www.primula.gr>